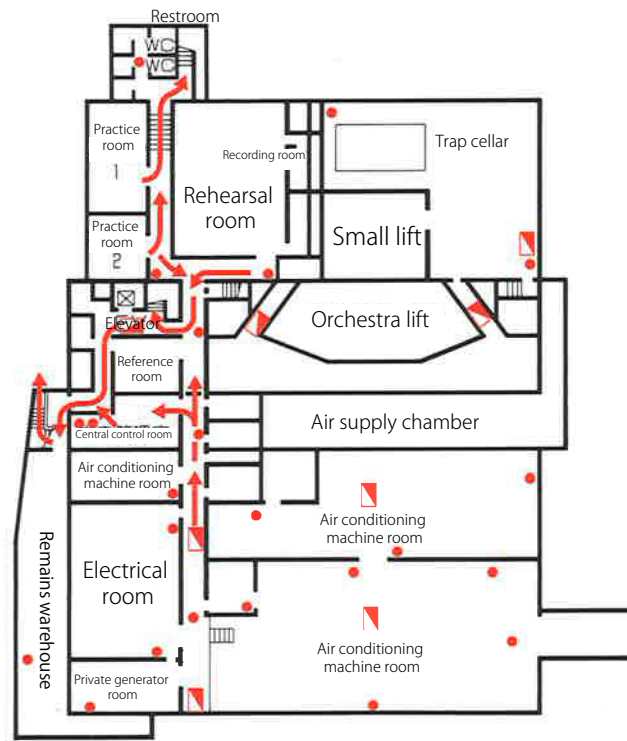


# Rexxam Hall (Kagawa Kenmin Hall) Main Hall Building Evacuation Plan

B1F



## In case of fire

In the event of a fire, please notify us verbally or by using the in-house telephones.

Phone extensions

(4F) Administrative Office (246-248)

(B1F) Central Control Room (200)

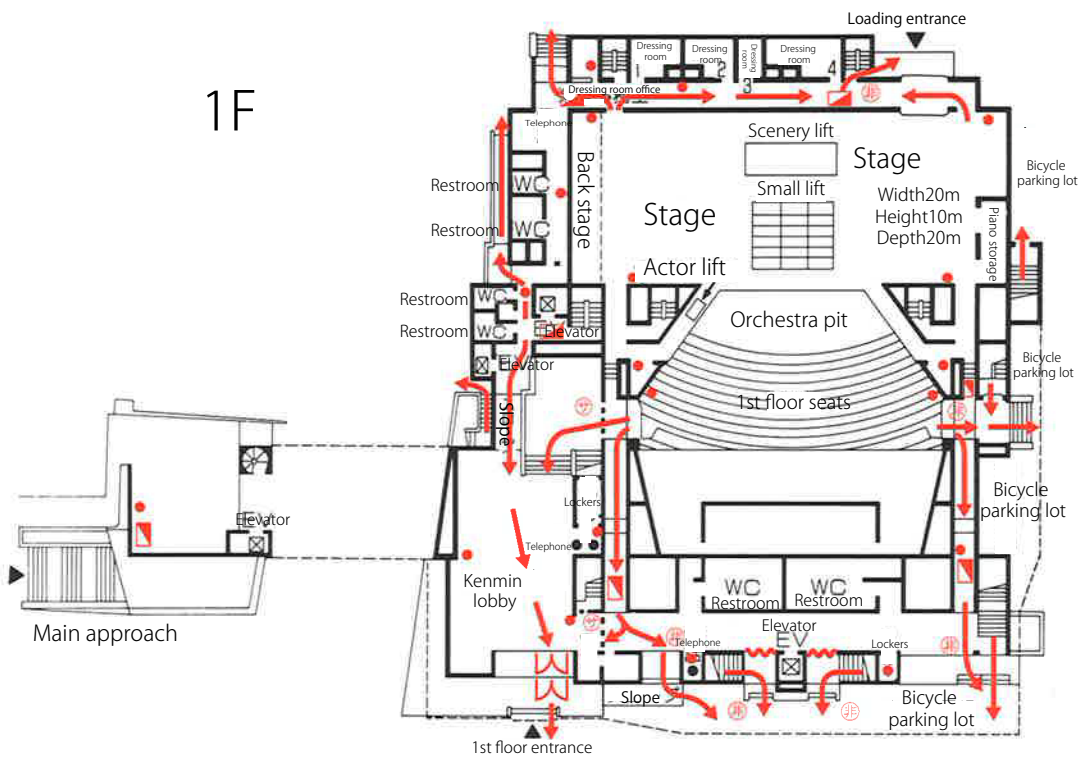
(1F) Security Guard Room (210)

In the event of a fire in the building, emergency broadcast equipment and megaphones will be used to notify the public.

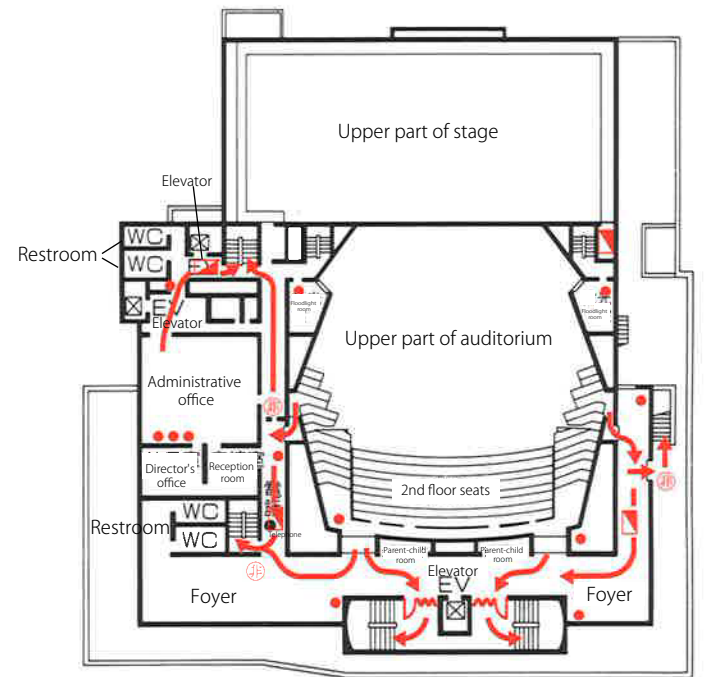
Emergency exits are indicated by green lights.

Please cooperate with hall staff in extinguishing fires and guiding evacuation.

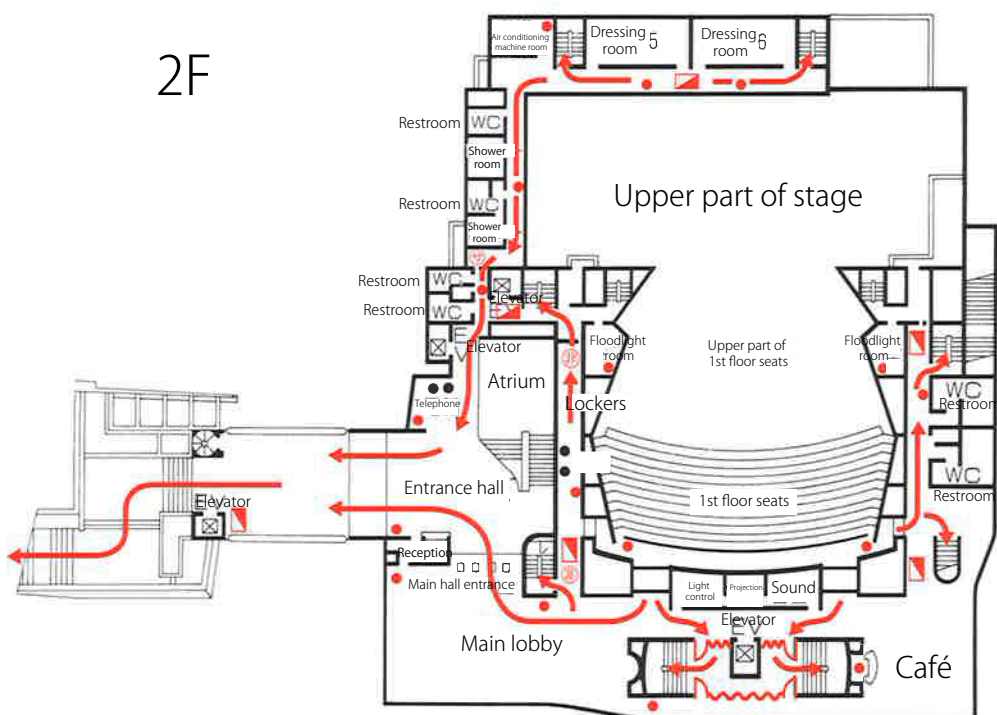
1F



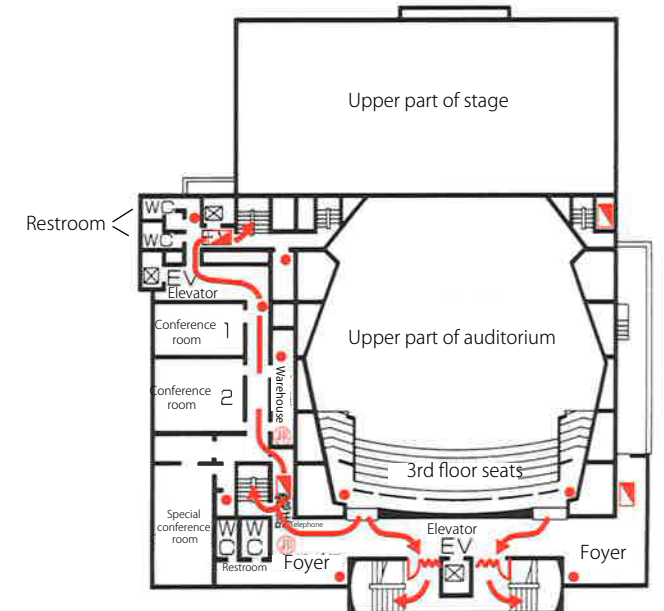
4F



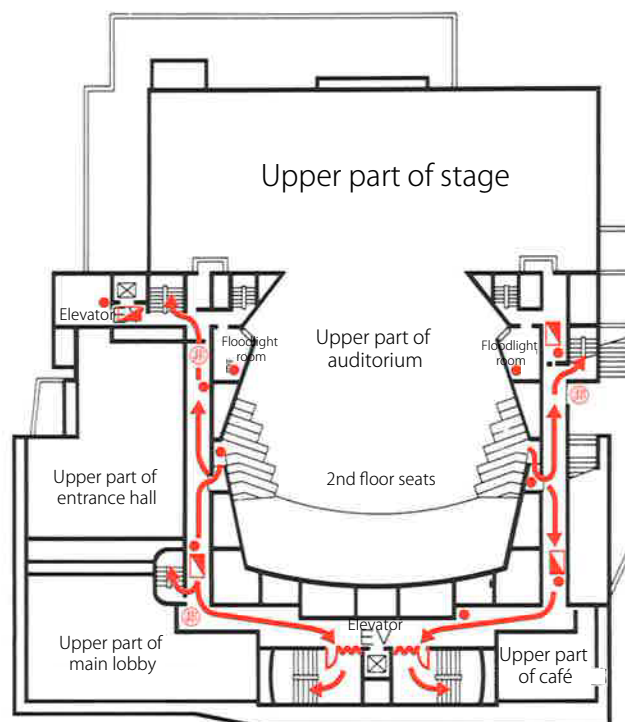
2F



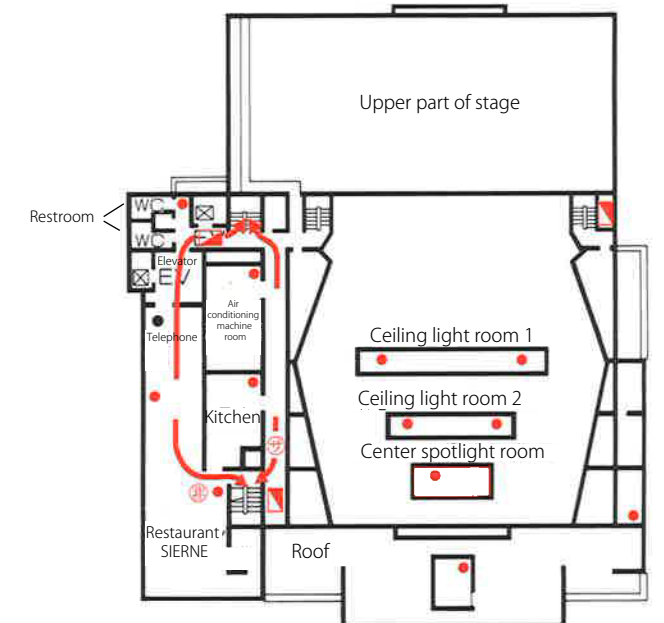
5F



3F



6F



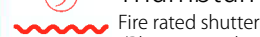
## Usage Guide



Thumbturn with green plastic cover



Thumbturn without green plastic cover



Fire rated shutter  
(Please note that the shutter will automatically lower and close in the event of a fire.)



Side door  
(Please open the side door to evacuate when the fire rated shutter closes.)



Fire extinguisher



Fire hydrant